

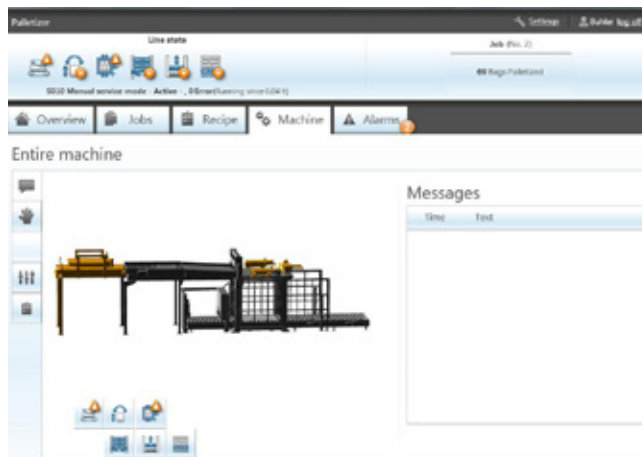


EasyPack Bagging Line Control System. MEAT.

The new benchmark in bagging line control.

Maximum user-friendliness and process control.

EasyPack is an efficient and integrated control system for bagging lines – from bagging bin to palletizing. With EasyPack the drives and controller are integrated in a single centralized system. Each operation within the bagging line can be configured and controlled on an industrial PC with 3D-animated graphical user interface and touch panel. EasyPack is applied for controlling complete bagging lines as well as stand-alone machines.



Intuitive touch operating of the EasyPack bagging line control system with clearly arranged 3D-animated visualization.

Maximum user-friendliness

An industrial PC with touch panel and advanced 3D-animated visualization provides outstanding user-friendliness and intuitive operation. This minimizes operator training need and increases productivity.

Increased machine and plant availability

The intuitive process visualization ensures quick error identification. As a result, machine and plant availability are increased sharply.

Outstanding process control

Advanced data reporting from the machine and line provides critical key performance indicators and system status information. Via integration in Bühler's plant control system WinCos® information quality and utilization of process data is increased sharply.

Benefits

- Intuitive operating and increased productivity
- Outstanding process control as well as high data quality and utilization
- Significant increase of line efficiency and availability

Bagging line control taken to the next level. Based on field-proven universal controller MEAG.



EasyPack – Full control over your bagging line.

EasyPack in action

As centerpieces of the bagging line EasyPack controls either the bagging station Maia or the single-spout bagging station MWPF. EasyPack is based on Bühler's field-proven and established universal controller MEAG. Scale PLC and line

controller have been integrated in one single unit. This ensures optimized costs thanks to a minimized spare parts need. EasyPack comes with a long product life-cycle time as it is independent of any operating system.

Technical data.

Housing and panel

Enclosure

Screen

Ambient conditions

Temperature

Relative air humidity

Power input

Data back-up

Conformity

Interface

IP65 NEMA 4

15" touch TFT in wide-screen format 1280x800

Operation: 0°C to +50°C

Operation: ≤95%; no condensation

24VDC +/- 20%

Min. 10 years (battery-buffered RAM) SSD

CE and UL

1x USB 3.0 front, 4x USB 3.0 back, 2x ethernet

Bühler AG

9240 Uzwil
Switzerland

T +41 71 955 11 11
F +41 71 955 66 11

buhlergroup.com

Flyer MEAT en 08/18 ZACC