

Bagging Carousel.

MWPL



High bagging capacity. Bag packing at the top performance level.



Application

- Bagging of cereal grain flours, feed meals, and premixes (up to 18 bags per minute).
- Possible containers: open-mouth bags of paper, plastic, jute, or cotton (weight: 10 kg to 50 kg).
- Optionally available with automatic bag closing unit or automatic bag attacher.
- Can be combined with net-weight or differential-weight scale.

Neat packing – high level of sanitation

The bagging carousel is characterized by its high performance, versatility, and accurate bagging weights. In addition, an entirely enclosed bag spout and the aspiration system at the dump position prevent dust generation inside and outside the machine.

Your advantages.

- High sanitation standard
- Maximum operating reliability
- Efficient and flexible for various applications

Maximum operating reliability. Low maintenance costs thanks to rugged design.



High operating reliability

Operating trouble is all but excluded. Dust-resistant elements for all the pneumatic and mechanical components in the bagging area ensure dependable service.



Easy maintenance – short downtimes

Rugged system components ensure long service times and easy exchanges. Thanks to good accessibility, cleaning of the interior of the bagging carousel is possible within a short time.



Maximum accuracy

The modern drive concept ensures fast and reproducible positioning of the bags. The rotary plate is directly slipped onto the flat gearing. The motor, gearing, and bearings are located outside the bagging area.



User-friendly operation

Easy, intuitive operation assisted by the WinP@ck bagging control system. The colored touch-screen terminal ensures realistic process visualization.

Flexibility through modularity.

High flexibility for maximum bagging capacity.



Flexibility through modularity

The MWPL bagging carousel is an integral element of an entire modular system. It can be applied as an isolated solution or as part of a complete Bühler bagging solution. Different system versions with a variable number of bag spouts, bag filling openings, and shakers are available for selection.



Manual or automatic bag feed

Fastening to the bag spout either by hand or in conjunction with an automatic bag attacher.

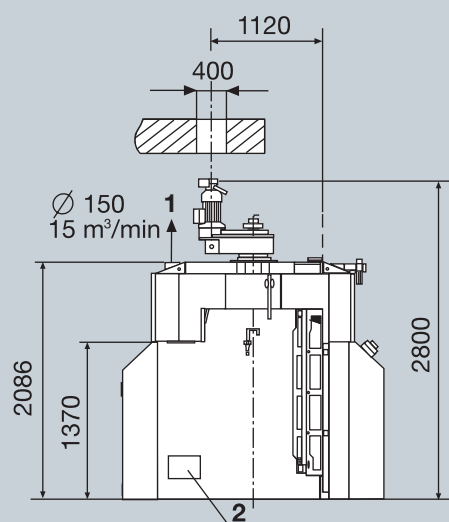


High bagging capacity

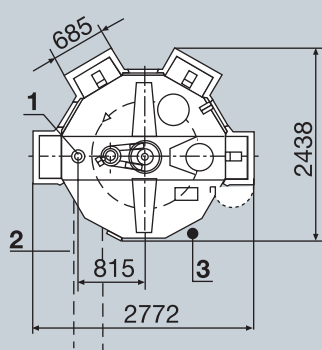
The shakers ensure optimal product compaction, making for optimal further processing and conservation of bag material.

Bagging Carousel MWPL.

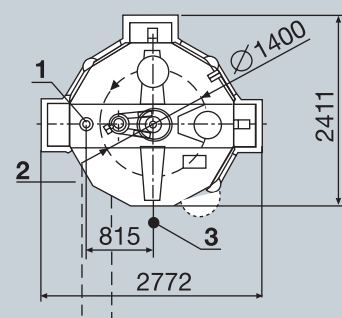
Technical data.



- 1 Aspiration connection
- 2 Belt conveyor to bag closing unit
- 3 Location of operator



MWPL-3/6



MWPL-4

Technical data

Model	Bag spouts	Angular increment	Filling weights	Shaker	Bag filling openings ¹⁾	Capacity per minute ²⁾
MWPL-3	3	120°	10–50kg	1	1	up to 6 bags
MWPL-3 ³⁾	3	120°	10–50kg	0	1	up to 15 bags
MWPL-3S	3	60°	10–50kg	3	1–2	up to 9 bags
MWPL-4	4	90°	10–50kg	2	1–2	up to 11 bags
MWPL-6	6	60°	10–50kg	3	1–2	up to 18 bags

¹⁾ depending on weighing system used

²⁾ depending on weighing system used, filling weight, product, and operating personnel

³⁾ for free-flowing products without shaker

All machine types are available in versions for right-hand or left-hand rotation.
Components in contact with the product are available in mild or stainless steel.

Bag qualities

The bagging carousel allows bags of paper, plastic, jute, or cotton to be filled.

Dimensions and weights

Model standard version	Dimensions in mm	Net weight max. (exclusive of packing)
MWPL-3	2772 × 2800 × 2438	1950 kg
MWPL-3S		2250 kg
MWPL-4		2100 kg
MWPL-6		2450 kg

Bühler AG
CH-9240 Uzwil, Switzerland
T +41 71 955 11 11
F +41 71 955 66 11
www.buhlergroup.com

