

Replacement Rolls for all 3-Roll Mills for Ink/Paint.

Buhler
Customer Service
Grinding &
Dispersion

For preventive maintenance, we recommend using Bühler replacement parts. We have reconditioned replacement parts and components in stock, ready to be shipped when you need them. Maintenance work can be scheduled in advance, and the parts can be replaced either by our

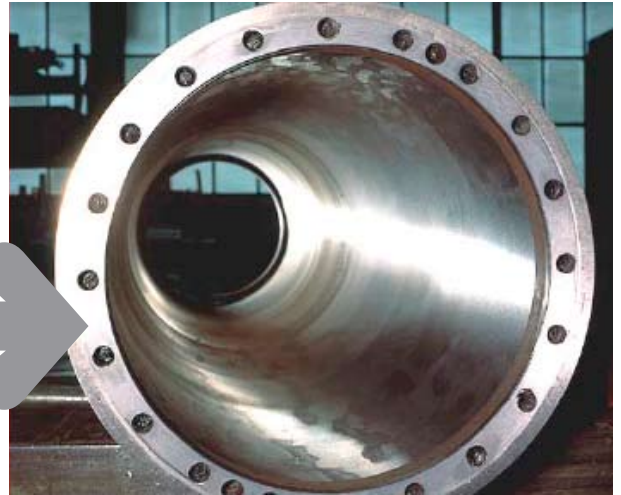
service crew or your own maintenance personnel. All replacement parts are reconditioned and tested in our factory.

Before reconditioning



Deposits of rust, algae, scale, etc. on the inside of the roll.

After reconditioning



Turned-out roll with clean inside surface.



Pitting on the roll edge (example of roll damage).



Optimal roll surface and edges after reconditioning.

Buhler's commitment to service:

We will deliver first-class replacement rolls that have been reconditioned in our factory. These rolls are reconditioned and ground to your specifications under the same guarantee of quality as provided for new rolls.

Our offer includes the following services:

- Individualized planning for revisions and ordering of materials
- Removal of the old rolls
- Installation of the reconditioned rolls
- Resumed operation of the machine
- Optimum adjustment of the roll mill
- Extensive spare parts kit for replacing the rolls
- Replacement rolls are available in standard sizes

Advantages for you:

- Low production costs based on consistently high throughput capacity and efficient cooling
- Optimum product quality due to uniform degree of fineness for grinding across the entire length of the roll
- Rolls are replaced quickly during preventive maintenance
- Any modifications made on the machine are taken into account

Price upon request